

CHIPPS HILL BOTANICAL SURVEY

Ben Paternoster, July 2024



Contents

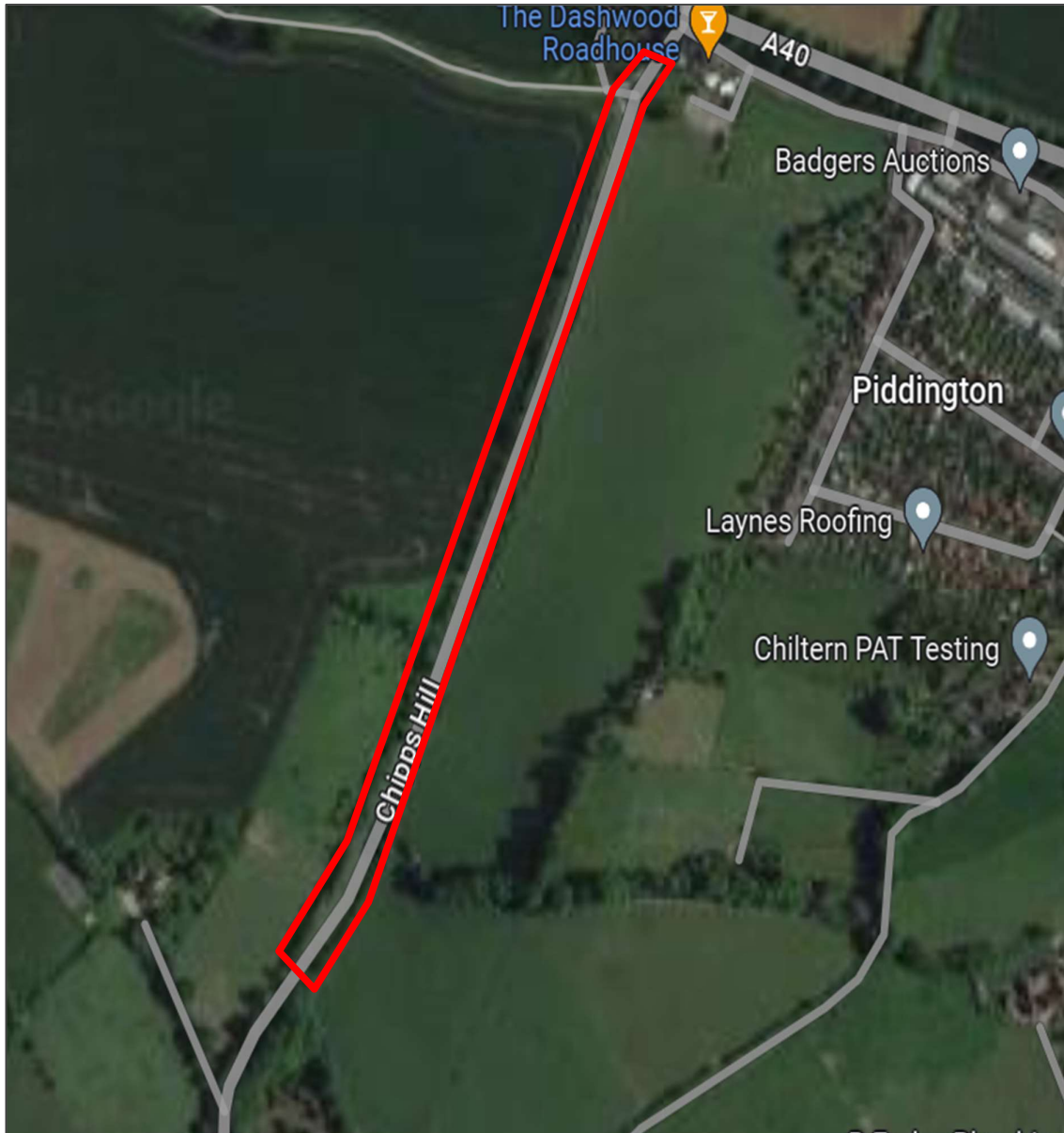
1. Introduction.....	2
2. Site plan	2
3. Species list	3
4. Conclusion.....	5

1. Introduction.

On 20/07/24 Ben Paternoster (BSBI FISC level 4) conducted a botanical survey of Chipps Hill to assess current condition and make recommendations for further maintenance.

2. Site plan

The site is shown in the map below, the red line indicating the area surveyed.



3. Species list

103 vascular plant species were recorded at the site.

Graminoids	
Common Name	Botanical Name
Cocks-foot	<i>Dactylis glomerata</i>
False Oat-grass	<i>Arrhenatherum elatius</i>
False Brome	<i>Brachypodium sylvaticum</i>
Red Fescue	<i>Festuca rubra</i>
Yorkshire Fog	<i>Holcus lanatus</i>
Perennial Rye grass	<i>Lolium perenne</i>
Timothy	<i>Phleum pratense</i>
Smaller Cats-tail	<i>Phleum bertolonii</i>
Quaking Grass	<i>Briza media</i>
Meadow Barley	<i>Hordeum brachyantherum</i>
Meadow Foxtail	<i>Alopecurus pratensis</i>
Barren Brome	<i>Anisantha sterilis</i>
Annual Meadow Grass	<i>Poa annua</i>
Smooth Meadow Grass	<i>Poa pratensis</i>
Meadow Oat-grass	<i>Aveluna pratensis</i>
Spiked Sedge	<i>Carex spicata</i>

Herbaceous species	
Common Name	Botanical Name
Wood Avens	<i>Geum urbanum</i>
Agrimony	<i>Agrimonia eupatoria</i>
Salad Burnet	<i>Poterium sanguisorba</i>
Bramble	<i>Rubus fruticosus agg.</i>
Creeping Cinquefoil	<i>Potentilla reptans</i>
Goats Rue	<i>Galega officinalis</i>
Kidney Vetch	<i>Anthyllis vulneraria</i>
Common Bird`s-foot-trefoil	<i>Lotus corniculatus</i>
Tufted Vetch	<i>Vicia Cracca</i>
Meadow Vetchling	<i>Lathyrus pratensis</i>
Broad-leaved Everlasting Pea	<i>Lathyrus latifolius</i>
Smooth Tare	<i>Ervum tetraspermum</i>
Black Medick	<i>Medicago lupulina</i>
Hop Trefoil	<i>Trifolium campestre</i>
Lucerne	<i>Medicago sativa sativa</i>
Red Clover	<i>Trifolium pratense</i>
Common Restharrow	<i>Ononis repens</i>
Dark Mullein	<i>Verbascum nigra</i>
Common Nettle	<i>Urtica dioica</i>
Field Scabious	<i>Knautia arvensis</i>
Wild Teasel	<i>Dipsacus fullonum</i>
Meadow Buttercup	<i>Ranunculus acris</i>
Creeping Buttercup	<i>Ranunculus repens</i>
Good King Henry	<i>Blitum bonus-henricus</i>
Spear Thistle	<i>Cirsium vulgare</i>

Creeping Thistle	<i>Cirsium arvense</i>
Rough Hawkbit	<i>Leotodon hispidus</i>
Cat's-ear	<i>Hypochaeris radicata</i>
Goats Beard	<i>Tragopogon pratensis</i>
Perennial Sow-thistle	<i>Sonchus arvensis</i>
Hawkweed	<i>Hieracium</i> agg.
Prickly lettuce	<i>Lactuca serriola</i>
Dandelion	<i>Taraxacum</i> agg.
Yarrow	<i>Achillea millefolium</i>
Oxeye Daisy	<i>Leucanthemum vulgare</i>
Mugwort	<i>Artemisia vulgaris</i>
Common Ragwort	<i>Senecio jacobaea</i>
Lesser Knapweed	<i>Centaurea nigra</i>
Groundsel	<i>Senecio vulgare</i>
Greater Knapweed	<i>Centaurea scabiosa</i>
Perennial Sow-thistle	<i>Sonchus arvensis</i>
Ploughman's-spikenard	<i>Inula conyzae</i>
Nipplewort	<i>Lapsana communis</i>
Goat's Beard	<i>Tragopogon pratensis</i>
Cowslip	<i>Primula veris</i>
Hedge Bedstraw	<i>Galium alba</i>
Cleavers	<i>Galium aparine</i>
Curled Dock	<i>Rumex crispus</i>
Knotgrass	<i>Polygonum aviculare</i>
Common Sorrel	<i>Rumex acetosa</i>
Red Campion	<i>Silene dioica</i>
White Campion	<i>Silene latifolia</i>
Bladder Campion	<i>Silene vulgaris</i>
Common Mouse-ear	<i>Cerastium fontanum</i>
Hedgerow Cranes-bill	<i>Geranium pyrenaicum</i>
Self-Heal	<i>Prunella vulgaris</i>
Ground-Ivy	<i>Glechoma hederaceae</i>
Wild Basil	<i>Clinopodium vulgare</i>
Wild Marjoram	<i>Origanum vulgare</i>
Hedge Woundwort	<i>Stachys sylvatica</i>
Black Horehound	<i>Ballota nigra</i>
Garlic Mustard	<i>Alliaria petiolata</i>
Cow Parsley	<i>Anthriscus sylvestris</i>
Wild Parsnip	<i>Pastinaca sativa</i>
Wild Carrot	<i>Daucus carota carota</i>
Hogweed	<i>Heracleum sphondylium</i>
Alexanders	<i>Smyrniolum olusatrum</i>
Hemlock	<i>Conium maculatum</i>
Upright Hedge Parsley	<i>Torilis japonica</i>
Ribwort Plantain	<i>Plantago lanceolata</i>
Greater Plantain	<i>Plantago major</i>
Perforate St John's-wort	<i>Hypericum perforatum</i>
Rosebay Willowherb	<i>Chamerion angustifolium</i>
Broad-leaved Willowherb	<i>Epilobium montanum</i>
Clustered Bellflower	<i>Campanula glomerata</i>
Yellow Rattle	<i>Rhinanthus minor</i>
Red Bartsia	<i>Odontites vernus</i>
Common Centaury	<i>Centaureum erythraea</i>

Common Toadflax	<i>Linaria vulgaris</i>
Field Bindweed	<i>Convolvulus arvensis</i>
Hedge Bindweed	<i>Calystegia sepium</i>
Wood Forget-me-not	<i>Myosotis sylvatica</i>
White Bryony	<i>Bryonia cretica</i>
Traveller`s Joy	<i>Clematis vitalba</i>
Bracken	<i>Pteridium aquilinum</i>
Small Melilot	<i>Melilotus indicus</i>
Pyramidal Orchid	<i>Anacamptis pyramidalis</i>

4. Conclusion

The species list indicates that the site is classed as g2a lowland calcareous grassland, the site needs to be cut and collected again in autumn to further lower the nutrient levels and to remove encroaching scrub.

It could be beneficial to place some of the arisings from the Piddington bound side of the verge that was more herb diverse on the opposite verge to improve the seed bank.

There was a lower abundance of Dark Mullein and Kidney Vetch compared to last year that are the larval foodplants of the UK BAP priority species the Striped Lychnis Moths and Small Blue Butterfly.

Wild Marjoram was far more abundant than last year especially in areas where dense scrub was removed last year. It is a very important plant in supporting pollinators.

Generally herbaceous wildflowers were more abundant this year at the site, this is likely due to the removal of encroaching scrub.